

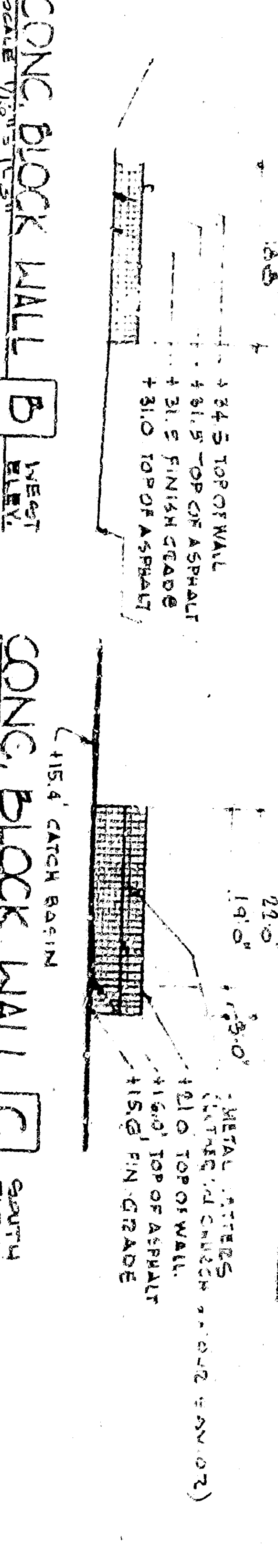
SECTION OF FINISH CONCRETE STRIP - CONCRETE STRIP - CONCRETE

SCALE: 1/4\"/>

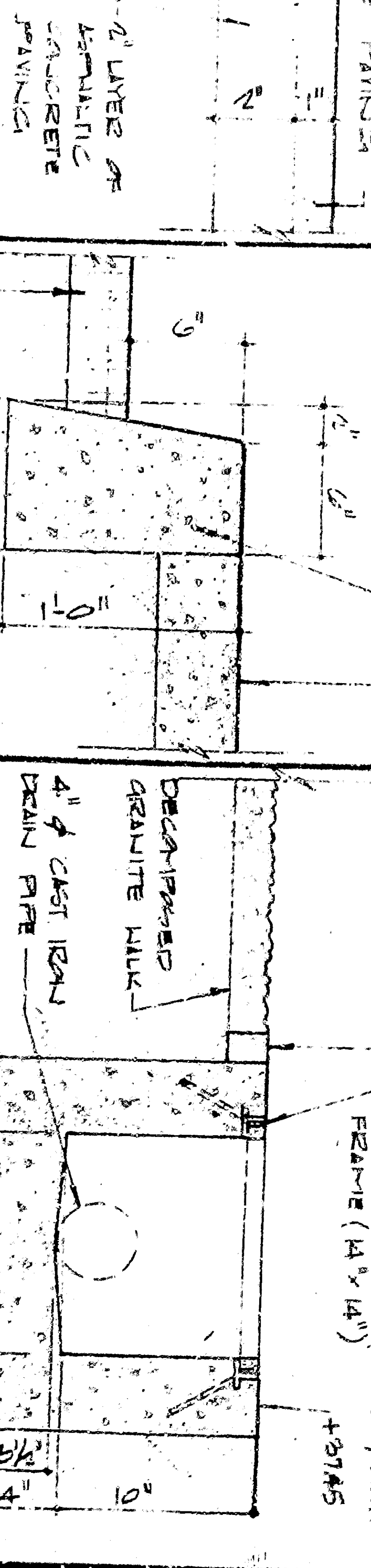
LEGAL DESCRIPTION:

SECTION 17, T34N, R17E, S4E, DISTRICT 4, BLK. 11, LOTS 1, 2, 3, 4, 5, 6, 7, 8, 9, 10, 11, 12, 13, 14, 15, 16, 17, 18, 19, 20, 21, 22, 23, 24, 25, 26, 27, 28, 29, 30, 31, 32, 33, 34, 35, 36, 37, 38, 39, 40, 41, 42, 43, 44, 45, 46, 47, 48, 49, 50, 51, 52, 53, 54, 55, 56, 57, 58, 59, 60, 61, 62, 63, 64, 65, 66, 67, 68, 69, 70, 71, 72, 73, 74, 75, 76, 77, 78, 79, 80, 81, 82, 83, 84, 85, 86, 87, 88, 89, 90, 91, 92, 93, 94, 95, 96, 97, 98, 99, 100, 101, 102, 103, 104, 105, 106, 107, 108, 109, 110, 111, 112, 113, 114, 115, 116, 117, 118, 119, 120, 121, 122, 123, 124, 125, 126, 127, 128, 129, 130, 131, 132, 133, 134, 135, 136, 137, 138, 139, 140, 141, 142, 143, 144, 145, 146, 147, 148, 149, 150, 151, 152, 153, 154, 155, 156, 157, 158, 159, 160, 161, 162, 163, 164, 165, 166, 167, 168, 169, 170, 171, 172, 173, 174, 175, 176, 177, 178, 179, 180, 181, 182, 183, 184, 185, 186, 187, 188, 189, 190, 191, 192, 193, 194, 195, 196, 197, 198, 199, 200, 201, 202, 203, 204, 205, 206, 207, 208, 209, 210, 211, 212, 213, 214, 215, 216, 217, 218, 219, 220, 221, 222, 223, 224, 225, 226, 227, 228, 229, 230, 231, 232, 233, 234, 235, 236, 237, 238, 239, 240, 241, 242, 243, 244, 245, 246, 247, 248, 249, 250, 251, 252, 253, 254, 255, 256, 257, 258, 259, 260, 261, 262, 263, 264, 265, 266, 267, 268, 269, 270, 271, 272, 273, 274, 275, 276, 277, 278, 279, 280, 281, 282, 283, 284, 285, 286, 287, 288, 289, 290, 291, 292, 293, 294, 295, 296, 297, 298, 299, 300, 301, 302, 303, 304, 305, 306, 307, 308, 309, 310, 311, 312, 313, 314, 315, 316, 317, 318, 319, 320, 321, 322, 323, 324, 325, 326, 327, 328, 329, 330, 331, 332, 333, 334, 335, 336, 337, 338, 339, 340, 341, 342, 343, 344, 345, 346, 347, 348, 349, 350, 351, 352, 353, 354, 355, 356, 357, 358, 359, 360, 361, 362, 363, 364, 365, 366, 367, 368, 369, 370, 371, 372, 373, 374, 375, 376, 377, 378, 379, 380, 381, 382, 383, 384, 385, 386, 387, 388, 389, 390, 391, 392, 393, 394, 395, 396, 397, 398, 399, 400, 401, 402, 403, 404, 405, 406, 407, 408, 409, 410, 411, 412, 413, 414, 415, 416, 417, 418, 419, 420, 421, 422, 423, 424, 425, 426, 427, 428, 429, 430, 431, 432, 433, 434, 435, 436, 437, 438, 439, 440, 441, 442, 443, 444, 445, 446, 447, 448, 449, 450, 451, 452, 453, 454, 455, 456, 457, 458, 459, 460, 461, 462, 463, 464, 465, 466, 467, 468, 469, 470, 471, 472, 473, 474, 475, 476, 477, 478, 479, 480, 481, 482, 483, 484, 485, 486, 487, 488, 489, 490, 491, 492, 493, 494, 495, 496, 497, 498, 499, 500, 501, 502, 503, 504, 505, 506, 507, 508, 509, 510, 511, 512, 513, 514, 515, 516, 517, 518, 519, 520, 521, 522, 523, 524, 525, 526, 527, 528, 529, 530, 531, 532, 533, 534, 535, 536, 537, 538, 539, 540, 541, 542, 543, 544, 545, 546, 547, 548, 549, 550, 551, 552, 553, 554, 555, 556, 557, 558, 559, 560, 561, 562, 563, 564, 565, 566, 567, 568, 569, 570, 571, 572, 573, 574, 575, 576, 577, 578, 579, 580, 581, 582, 583, 584, 585, 586, 587, 588, 589, 590, 591, 592, 593, 594, 595, 596, 597, 598, 599, 600, 601, 602, 603, 604, 605, 606, 607, 608, 609, 610, 611, 612, 613, 614, 615, 616, 617, 618, 619, 620, 621, 622, 623, 624, 625, 626, 627, 628, 629, 630, 631, 632, 633, 634, 635, 636, 637, 638, 639, 640, 641, 642, 643, 644, 645, 646, 647, 648, 649, 650, 651, 652, 653, 654, 655, 656, 657, 658, 659, 660, 661, 662, 663, 664, 665, 666, 667, 668, 669, 670, 671, 672, 673, 674, 675, 676, 677, 678, 679, 680, 681, 682, 683, 684, 685, 686, 687, 688, 689, 690, 691, 692, 693, 694, 695, 696, 697, 698, 699, 700, 701, 702, 703, 704, 705, 706, 707, 708, 709, 710, 711, 712, 713, 714, 715, 716, 717, 718, 719, 720, 721, 722, 723, 724, 725, 726, 727, 728, 729, 730, 731, 732, 733, 734, 735, 736, 737, 738, 739, 740, 741, 742, 743, 744, 745, 746, 747, 748, 749, 750, 751, 752, 753, 754, 755, 756, 757, 758, 759, 760, 761, 762, 763, 764, 765, 766, 767, 768, 769, 770, 771, 772, 773, 774, 775, 776, 777, 778, 779, 780, 781, 782, 783, 784, 785, 786, 787, 788, 789, 790, 791, 792, 793, 794, 795, 796, 797, 798, 799, 800, 801, 802, 803, 804, 805, 806, 807, 808, 809, 810, 811, 812, 813, 814, 815, 816, 817, 818, 819, 820, 821, 822, 823, 824, 825, 826, 827, 828, 829, 830, 831, 832, 833, 834, 835, 836, 837, 838, 839, 840, 841, 842, 843, 844, 845, 846, 847, 848, 849, 850, 851, 852, 853, 854, 855, 856, 857, 858, 859, 860, 861, 862, 863, 864, 865, 866, 867, 868, 869, 870, 871, 872, 873, 874, 875, 876, 877, 878, 879, 880, 881, 882, 883, 884, 885, 886, 887, 888, 889, 890, 891, 892, 893, 894, 895, 896, 897, 898, 899, 900, 901, 902, 903, 904, 905, 906, 907, 908, 909, 910, 911, 912, 913, 914, 915, 916, 917, 918, 919, 920, 921, 922, 923, 924, 925, 926, 927, 928, 929, 930, 931, 932, 933, 934, 935, 936, 937, 938, 939, 940, 941, 942, 943, 944, 945, 946, 947, 948, 949, 950, 951, 952, 953, 954, 955, 956, 957, 958, 959, 960, 961, 962, 963, 964, 965, 966, 967, 968, 969, 970, 971, 972, 973, 974, 975, 976, 977, 978, 979, 980, 981, 982, 983, 984, 985, 986, 987, 988, 989, 990, 991, 992, 993, 994, 995, 996, 997, 998, 999, 1000

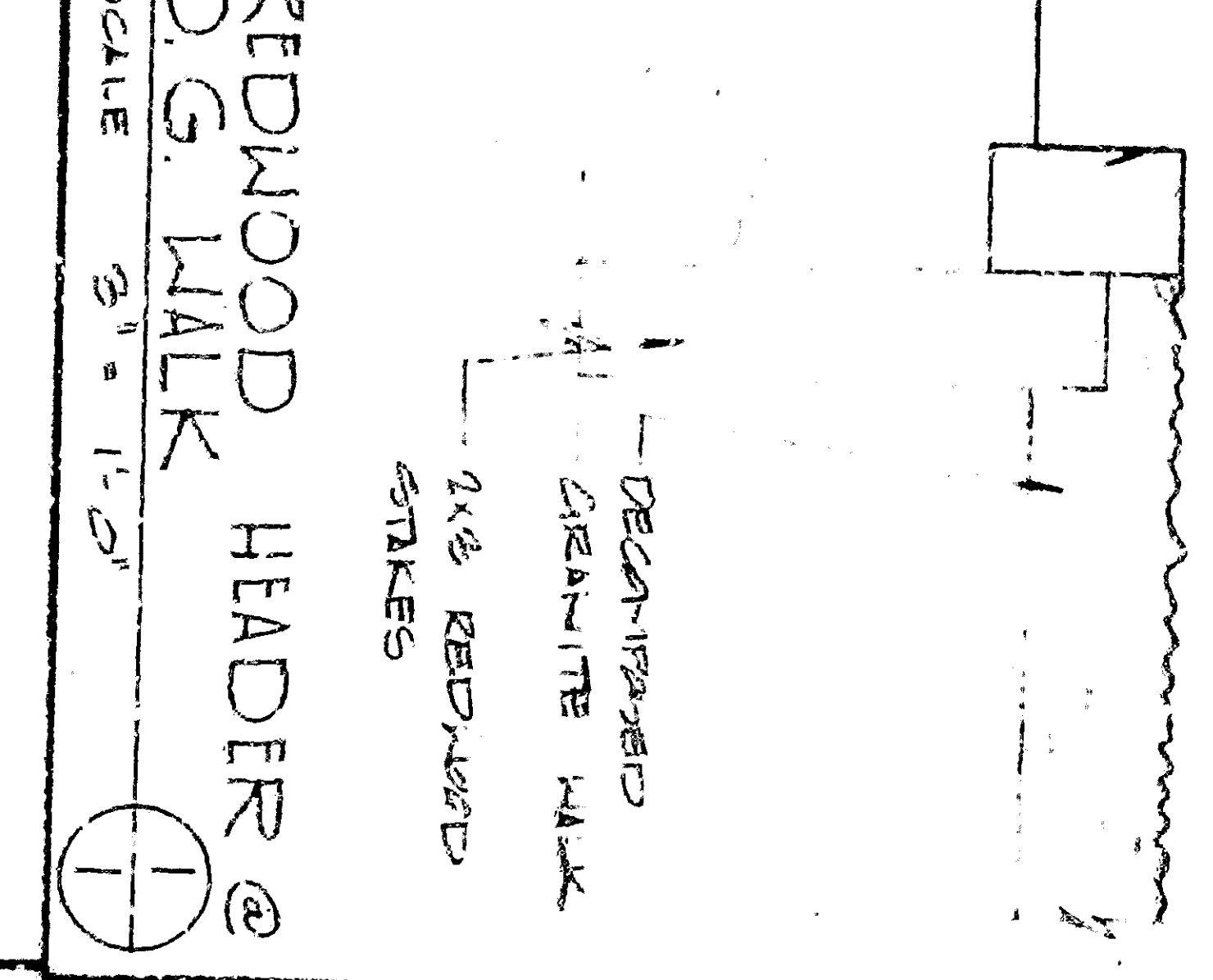
CONCRETE BLOCK WALL A - SOUTH-WEST ELEVATION



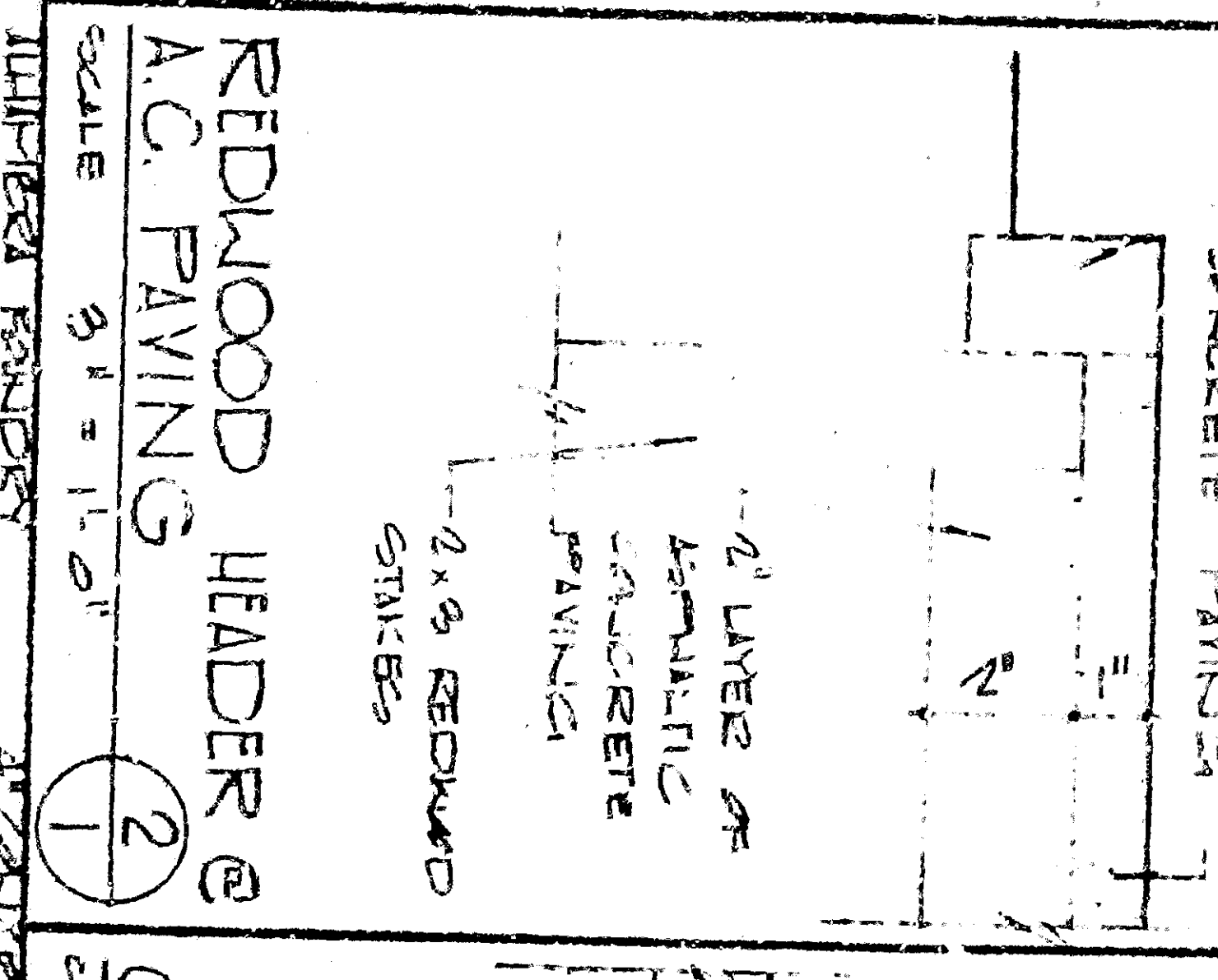
CONCRETE BLOCK WALL B - WEST ELEVATION



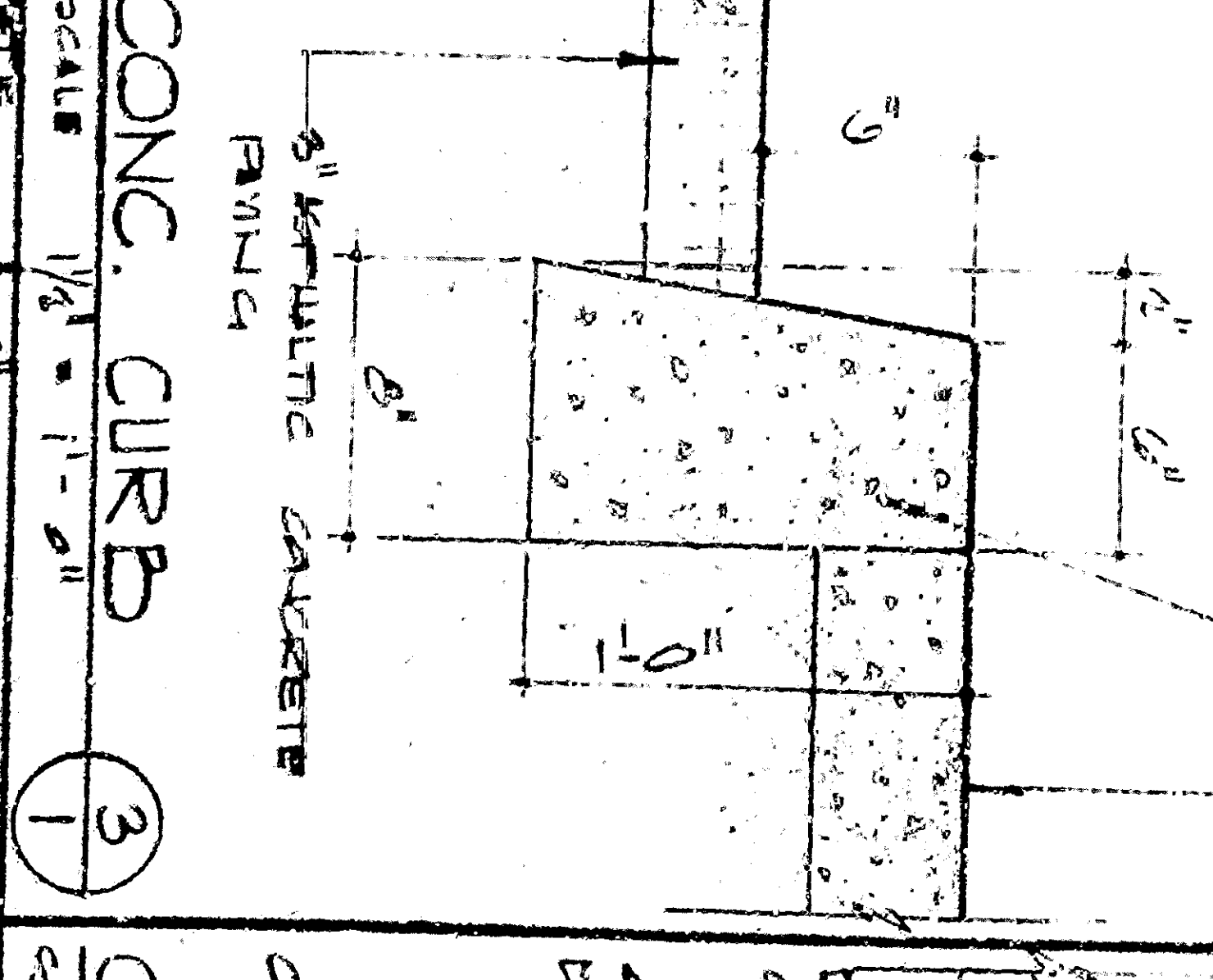
CONCRETE BLOCK WALL C - EAST ELEVATION



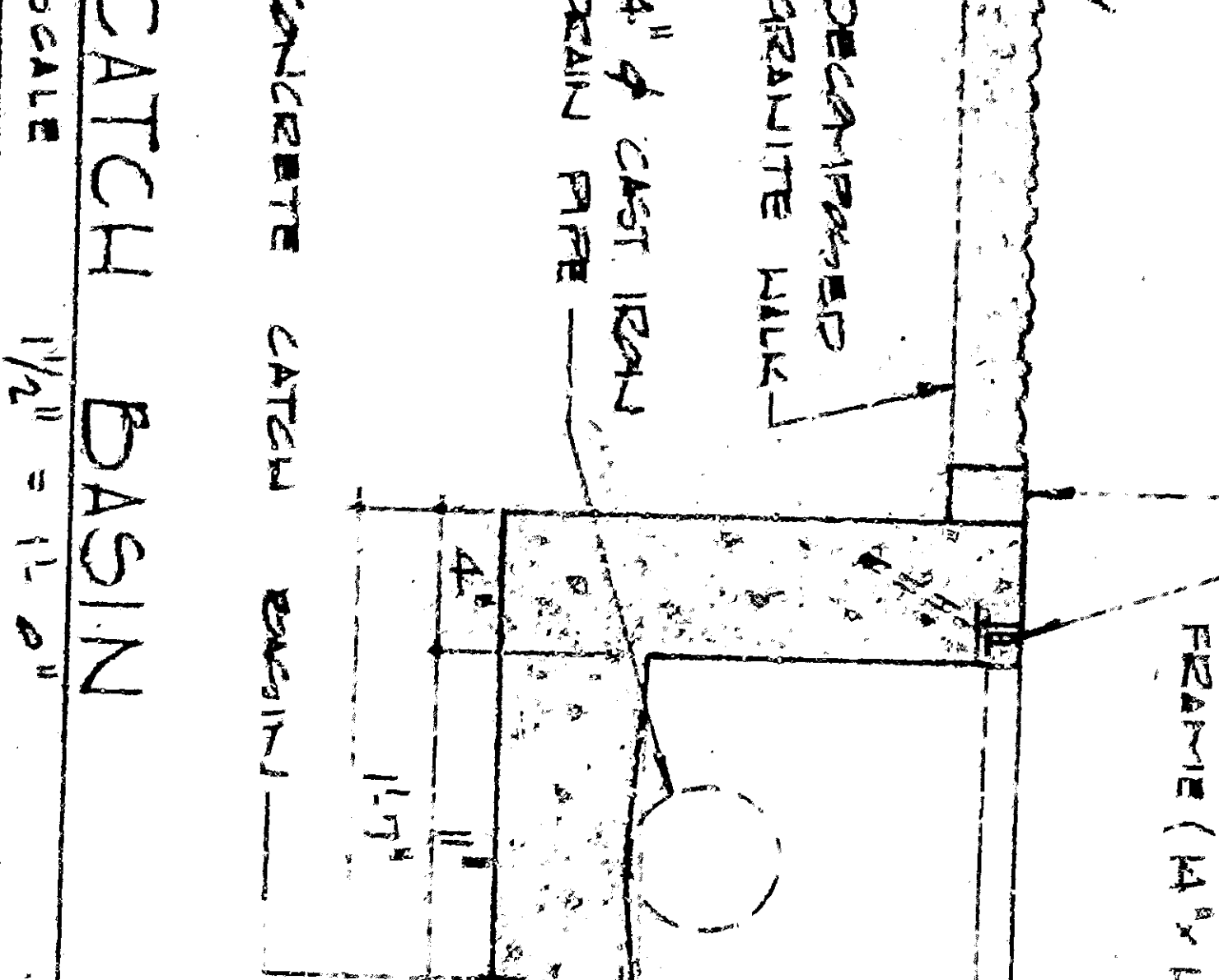
REDWOOD HEADER @ AC FINISH @ D/G WALK



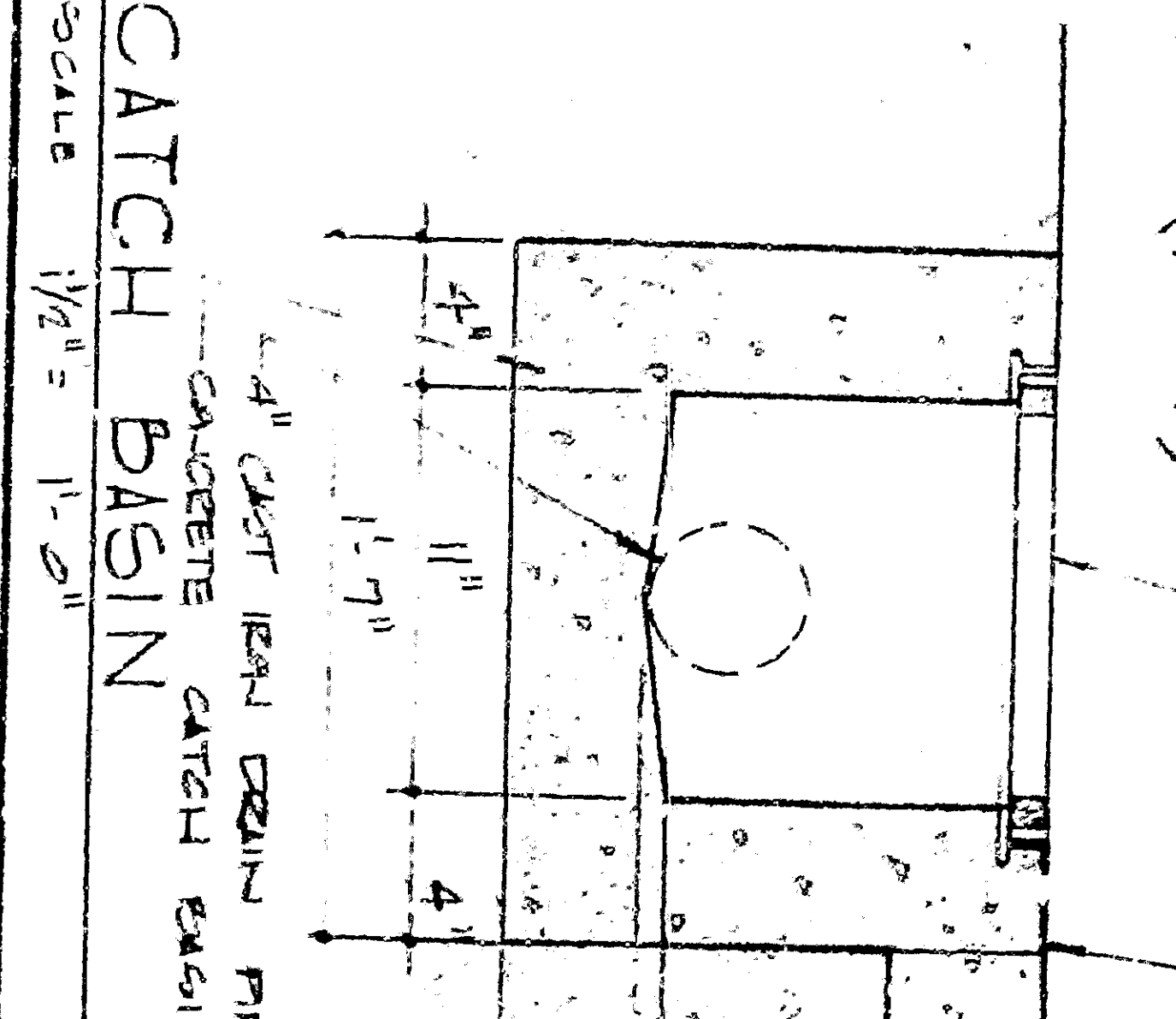
REDWOOD HEADER @ AC FINISH @



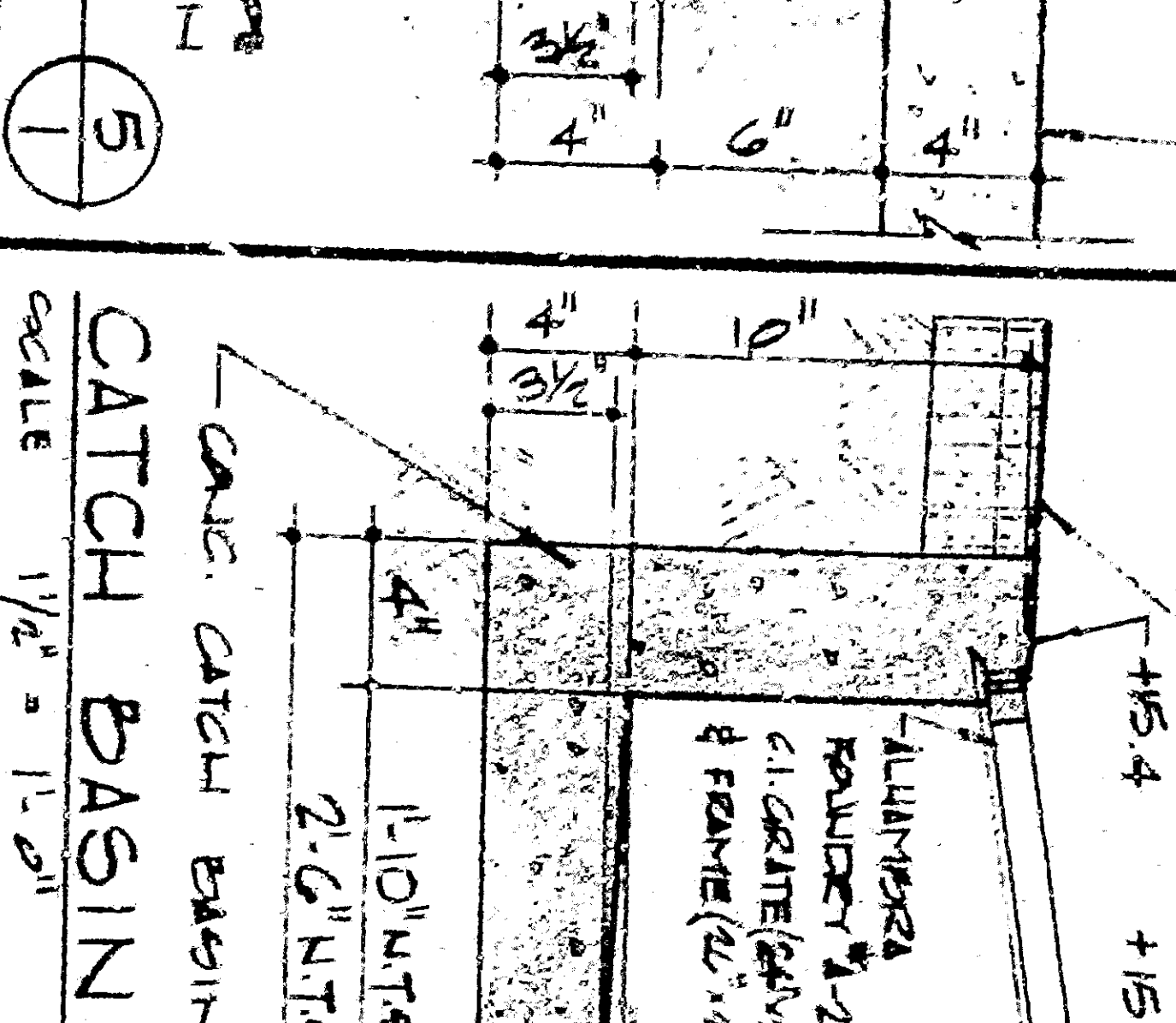
CONC. CURB @



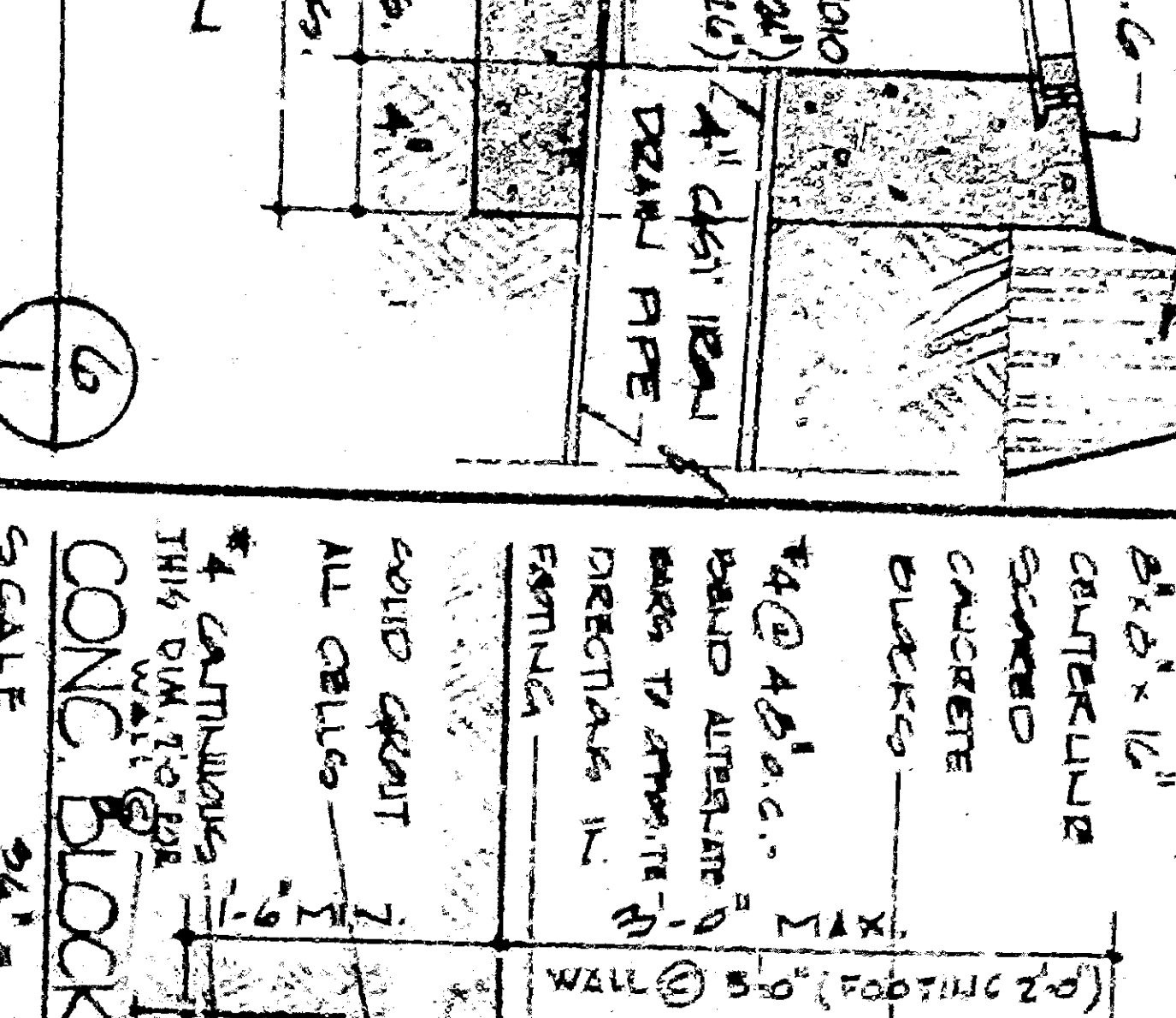
CATCH BASIN



CATCH BASIN



CATCH BASIN

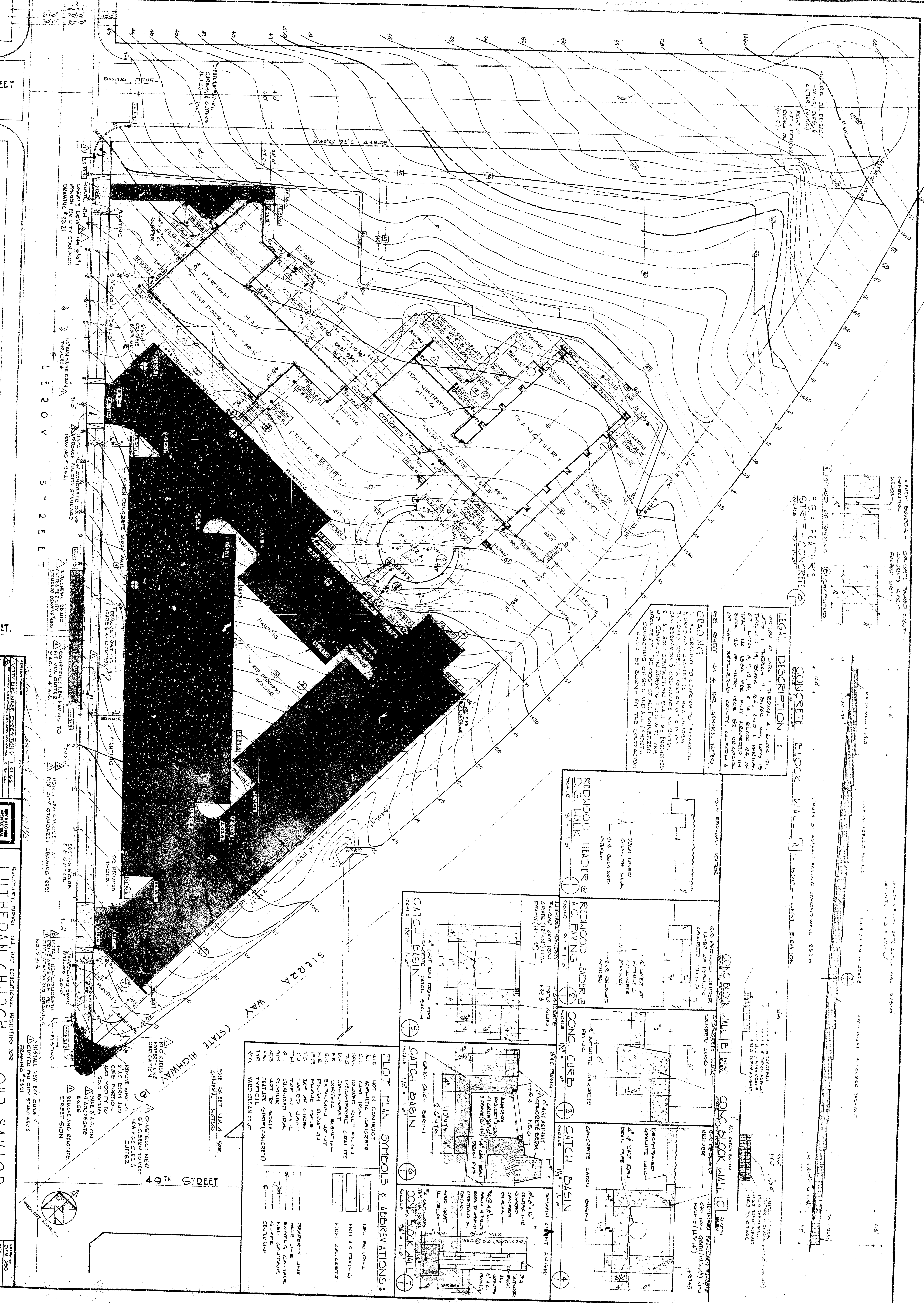


CONCRETE BLOCK WALL

GENERAL NOTES:

SEE SHEET NO. 4 FOR DIMENSIONAL NOTES.

PLOT PLAN SYMBOLS & ABBREVIATIONS:	
ALL CONSTRUCTION SHALL BE IN ACCORDANCE WITH THE CITY ENGINEERING DEPARTMENT'S STANDARD SPECIFICATIONS FOR HIGHWAY CONSTRUCTION.	
ALL CONSTRUCTION SHALL BE IN ACCORDANCE WITH THE CITY ENGINEERING DEPARTMENT'S STANDARD SPECIFICATIONS FOR SANITARIAN CONSTRUCTION.	
ALL CONSTRUCTION SHALL BE IN ACCORDANCE WITH THE CITY ENGINEERING DEPARTMENT'S STANDARD SPECIFICATIONS FOR STREET LIGHTING.	
ALL CONSTRUCTION SHALL BE IN ACCORDANCE WITH THE CITY ENGINEERING DEPARTMENT'S STANDARD SPECIFICATIONS FOR UTILITIES.	
ALL CONSTRUCTION SHALL BE IN ACCORDANCE WITH THE CITY ENGINEERING DEPARTMENT'S STANDARD SPECIFICATIONS FOR LANDSCAPING.	
ALL CONSTRUCTION SHALL BE IN ACCORDANCE WITH THE CITY ENGINEERING DEPARTMENT'S STANDARD SPECIFICATIONS FOR SIGNAGE.	
ALL CONSTRUCTION SHALL BE IN ACCORDANCE WITH THE CITY ENGINEERING DEPARTMENT'S STANDARD SPECIFICATIONS FOR EROSION CONTROL.	
ALL CONSTRUCTION SHALL BE IN ACCORDANCE WITH THE CITY ENGINEERING DEPARTMENT'S STANDARD SPECIFICATIONS FOR STORMWATER MANAGEMENT.	
ALL CONSTRUCTION SHALL BE IN ACCORDANCE WITH THE CITY ENGINEERING DEPARTMENT'S STANDARD SPECIFICATIONS FOR AIR QUALITY.	
ALL CONSTRUCTION SHALL BE IN ACCORDANCE WITH THE CITY ENGINEERING DEPARTMENT'S STANDARD SPECIFICATIONS FOR SOUND ABATEMENT.	
ALL CONSTRUCTION SHALL BE IN ACCORDANCE WITH THE CITY ENGINEERING DEPARTMENT'S STANDARD SPECIFICATIONS FOR HISTORIC PRESERVATION.	
ALL CONSTRUCTION SHALL BE IN ACCORDANCE WITH THE CITY ENGINEERING DEPARTMENT'S STANDARD SPECIFICATIONS FOR CULTURAL RESOURCE PROTECTION.	
ALL CONSTRUCTION SHALL BE IN ACCORDANCE WITH THE CITY ENGINEERING DEPARTMENT'S STANDARD SPECIFICATIONS FOR ENVIRONMENTAL RESTORATION.	
ALL CONSTRUCTION SHALL BE IN ACCORDANCE WITH THE CITY ENGINEERING DEPARTMENT'S STANDARD SPECIFICATIONS FOR CLIMATE RESILIENCE.	
ALL CONSTRUCTION SHALL BE IN ACCORDANCE WITH THE CITY ENGINEERING DEPARTMENT'S STANDARD SPECIFICATIONS FOR DISASTER PREPAREDNESS.	
ALL CONSTRUCTION SHALL BE IN ACCORDANCE WITH THE CITY ENGINEERING DEPARTMENT'S STANDARD SPECIFICATIONS FOR PUBLIC SAFETY.	
ALL CONSTRUCTION SHALL BE IN ACCORDANCE WITH THE CITY ENGINEERING DEPARTMENT'S STANDARD SPECIFICATIONS FOR COMMUNITY DEVELOPMENT.	
ALL CONSTRUCTION SHALL BE IN ACCORDANCE WITH THE CITY ENGINEERING DEPARTMENT'S STANDARD SPECIFICATIONS FOR ECONOMIC DEVELOPMENT.	
ALL CONSTRUCTION SHALL BE IN ACCORDANCE WITH THE CITY ENGINEERING DEPARTMENT'S STANDARD SPECIFICATIONS FOR SOCIAL EQUITY.	
ALL CONSTRUCTION SHALL BE IN ACCORDANCE WITH THE CITY ENGINEERING DEPARTMENT'S STANDARD SPECIFICATIONS FOR EQUITY AND INCLUSION.	
ALL CONSTRUCTION SHALL BE IN ACCORDANCE WITH THE CITY ENGINEERING DEPARTMENT'S STANDARD SPECIFICATIONS FOR SUSTAINABLE DEVELOPMENT.	
ALL CONSTRUCTION SHALL BE IN ACCORDANCE WITH THE CITY ENGINEERING DEPARTMENT'S STANDARD SPECIFICATIONS FOR GREEN BUILDING.	
ALL CONSTRUCTION SHALL BE IN ACCORDANCE WITH THE CITY ENGINEERING DEPARTMENT'S STANDARD SPECIFICATIONS FOR ENERGY EFFICIENCY.	
ALL CONSTRUCTION SHALL BE IN ACCORDANCE WITH THE CITY ENGINEERING DEPARTMENT'S STANDARD SPECIFICATIONS FOR WATER CONSERVATION.	
ALL CONSTRUCTION SHALL BE IN ACCORDANCE WITH THE CITY ENGINEERING DEPARTMENT'S STANDARD SPECIFICATIONS FOR WASTE REDUCTION.	
ALL CONSTRUCTION SHALL BE IN ACCORDANCE WITH THE CITY ENGINEERING DEPARTMENT'S STANDARD SPECIFICATIONS FOR RECYCLING.	
ALL CONSTRUCTION SHALL BE IN ACCORDANCE WITH THE CITY ENGINEERING DEPARTMENT'S STANDARD SPECIFICATIONS FOR PLANTING.	
ALL CONSTRUCTION SHALL BE IN ACCORDANCE WITH THE CITY ENGINEERING DEPARTMENT'S STANDARD SPECIFICATIONS FOR TREE PROTECTION.	
ALL CONSTRUCTION SHALL BE IN ACCORDANCE WITH THE CITY ENGINEERING DEPARTMENT'S STANDARD SPECIFICATIONS FOR BIODIVERSITY.	
ALL CONSTRUCTION SHALL BE IN ACCORDANCE WITH THE CITY ENGINEERING DEPARTMENT'S STANDARD SPECIFICATIONS FOR HABITAT RESTORATION.	
ALL CONSTRUCTION SHALL BE IN ACCORDANCE WITH THE CITY ENGINEERING DEPARTMENT'S STANDARD SPECIFICATIONS FOR WILDLIFE PROTECTION.	
ALL CONSTRUCTION SHALL BE IN ACCORDANCE WITH THE CITY ENGINEERING DEPARTMENT'S STANDARD SPECIFICATIONS FOR CULTURAL RESOURCE PROTECTION.	
ALL CONSTRUCTION SHALL BE IN ACCORDANCE WITH THE CITY ENGINEERING DEPARTMENT'S STANDARD SPECIFICATIONS FOR HISTORIC PRESERVATION.	
ALL CONSTRUCTION SHALL BE IN ACCORDANCE WITH THE CITY ENGINEERING DEPARTMENT'S STANDARD SPECIFICATIONS FOR ENVIRONMENTAL RESTORATION.	
ALL CONSTRUCTION SHALL BE IN ACCORDANCE WITH THE CITY ENGINEERING DEPARTMENT'S STANDARD SPECIFICATIONS FOR CLIMATE RESILIENCE.	
ALL CONSTRUCTION SHALL BE IN ACCORDANCE WITH THE CITY ENGINEERING DEPARTMENT'S STANDARD SPECIFICATIONS FOR DISASTER PREPAREDNESS.	
ALL CONSTRUCTION SHALL BE IN ACCORDANCE WITH THE CITY ENGINEERING DEPARTMENT'S STANDARD SPECIFICATIONS FOR PUBLIC SAFETY.	
ALL CONSTRUCTION SHALL BE IN ACCORDANCE WITH THE CITY ENGINEERING DEPARTMENT'S STANDARD SPECIFICATIONS FOR COMMUNITY DEVELOPMENT.	
ALL CONSTRUCTION SHALL BE IN ACCORDANCE WITH THE CITY ENGINEERING DEPARTMENT'S STANDARD SPECIFICATIONS FOR ECONOMIC DEVELOPMENT.	
ALL CONSTRUCTION SHALL BE IN ACCORDANCE WITH THE CITY ENGINEERING DEPARTMENT'S STANDARD SPECIFICATIONS FOR SOCIAL EQUITY.	
ALL CONSTRUCTION SHALL BE IN ACCORDANCE WITH THE CITY ENGINEERING DEPARTMENT'S STANDARD SPECIFICATIONS FOR EQUITY AND INCLUSION.	
ALL CONSTRUCTION SHALL BE IN ACCORDANCE WITH THE CITY ENGINEERING DEPARTMENT'S STANDARD SPECIFICATIONS FOR SUSTAINABLE DEVELOPMENT.	
ALL CONSTRUCTION SHALL BE IN ACCORDANCE WITH THE CITY ENGINEERING DEPARTMENT'S STANDARD SPECIFICATIONS FOR GREEN BUILDING.	
ALL CONSTRUCTION SHALL BE IN ACCORDANCE WITH THE CITY ENGINEERING DEPARTMENT'S STANDARD SPECIFICATIONS FOR ENERGY EFFICIENCY.	
ALL CONSTRUCTION SHALL BE IN ACCORDANCE WITH THE CITY ENGINEERING DEPARTMENT'S STANDARD SPECIFICATIONS FOR WATER CONSERVATION.	
ALL CONSTRUCTION SHALL BE IN ACCORDANCE WITH THE CITY ENGINEERING DEPARTMENT'S STANDARD SPECIFICATIONS FOR WASTE REDUCTION.	
ALL CONSTRUCTION SHALL BE IN ACCORDANCE WITH THE CITY ENGINEERING DEPARTMENT'S STANDARD SPECIFICATIONS FOR RECYCLING.	
ALL CONSTRUCTION SHALL BE IN ACCORDANCE WITH THE CITY ENGINEERING DEPARTMENT'S STANDARD SPECIFICATIONS FOR PLANTING.	
ALL CONSTRUCTION SHALL BE IN ACCORDANCE WITH THE CITY ENGINEERING DEPARTMENT'S STANDARD SPECIFICATIONS FOR TREE PROTECTION.	
ALL CONSTRUCTION SHALL BE IN ACCORDANCE WITH THE CITY ENGINEERING DEPARTMENT'S STANDARD SPECIFICATIONS FOR BIODIVERSITY.	
ALL CONSTRUCTION SHALL BE IN ACCORDANCE WITH THE CITY ENGINEERING DEPARTMENT'S STANDARD SPECIFICATIONS FOR HABITAT RESTORATION.	
ALL CONSTRUCTION SHALL BE IN ACCORDANCE WITH THE CITY ENGINEERING DEPARTMENT'S STANDARD SPECIFICATIONS FOR WILDLIFE PROTECTION.	



PLOT PLAN

SCALE: 1/4\"/>

51ST STREET

60⁰'

49TH STREET

47TH STREET

45TH STREET

43RD STREET

41ST STREET

39TH STREET

37TH STREET

35TH STREET

33RD STREET

31ST STREET

29TH STREET

27TH STREET

25TH STREET

23RD STREET

21ST STREET

19TH STREET

17TH STREET

15TH STREET

13TH STREET

11TH STREET

9TH STREET

7TH STREET

5TH STREET

3RD STREET

1ST STREET

49TH STREET

SILVEA WAY (STATE HIGHWAY)

LEEROY STREET

50TH STREET

CONCRETE BLOCK WALL @ 49TH STREET

CONCRETE BLOCK WALL @ 47TH STREET

CONCRETE BLOCK WALL @ 45TH STREET

CONCRETE BLOCK WALL @ 43RD STREET

CONCRETE BLOCK WALL @ 41ST STREET

CONCRETE BLOCK WALL @ 39TH STREET

CONCRETE BLOCK WALL @ 37TH STREET

CONCRETE BLOCK WALL @ 35TH STREET

CONCRETE BLOCK WALL @ 33RD STREET

CONCRETE BLOCK WALL @ 31ST STREET

CONCRETE BLOCK WALL @ 29TH STREET

CONCRETE BLOCK WALL @ 27TH STREET

CONCRETE BLOCK WALL @ 25TH STREET

CONCRETE BLOCK WALL @ 23RD STREET

CONCRETE BLOCK WALL @ 21ST STREET

CONCRETE BLOCK WALL @ 19TH STREET

CONCRETE BLOCK WALL @ 17TH STREET

CONCRETE BLOCK WALL @ 15TH STREET

CONCRETE BLOCK WALL @ 13TH STREET

CONCRETE BLOCK WALL @ 11TH STREET

CONCRETE BLOCK WALL @ 9TH STREET

CONCRETE BLOCK WALL @ 7TH STREET

CONCRETE BLOCK WALL @ 5TH STREET

CONCRETE BLOCK WALL @ 3RD STREET

CONCRETE BLOCK WALL @ 1ST STREET

CONCRETE BLOCK WALL @ 49TH STREET

CONCRETE BLOCK WALL @ 47TH STREET

CONCRETE BLOCK WALL @ 45TH STREET

CONCRETE BLOCK WALL @ 43RD STREET

CONCRETE BLOCK WALL @ 41ST STREET

CONCRETE BLOCK WALL @ 39TH STREET

CONCRETE BLOCK WALL @ 37TH STREET

CONCRETE BLOCK WALL @ 35TH STREET

CONCRETE BLOCK WALL @ 33RD STREET

CONCRETE BLOCK WALL @ 31ST STREET

CONCRETE BLOCK WALL @ 29TH STREET

CONCRETE BLOCK WALL @ 27TH STREET

CONCRETE BLOCK WALL @ 25TH STREET

CONCRETE BLOCK WALL @ 23RD STREET

CONCRETE BLOCK WALL @ 21ST STREET

CONCRETE BLOCK WALL @ 19TH STREET

CONCRETE BLOCK WALL @ 17TH STREET

CONCRETE BLOCK WALL @ 15TH STREET

CONCRETE BLOCK WALL @ 13TH STREET

CONCRETE BLOCK WALL @ 11TH STREET

CONCRETE BLOCK WALL @ 9TH STREET

CONCRETE BLOCK WALL @ 7TH STREET

CONCRETE BLOCK WALL @ 5TH STREET

CONCRETE BLOCK WALL @ 3RD STREET

CONCRETE BLOCK WALL @ 1ST STREET

